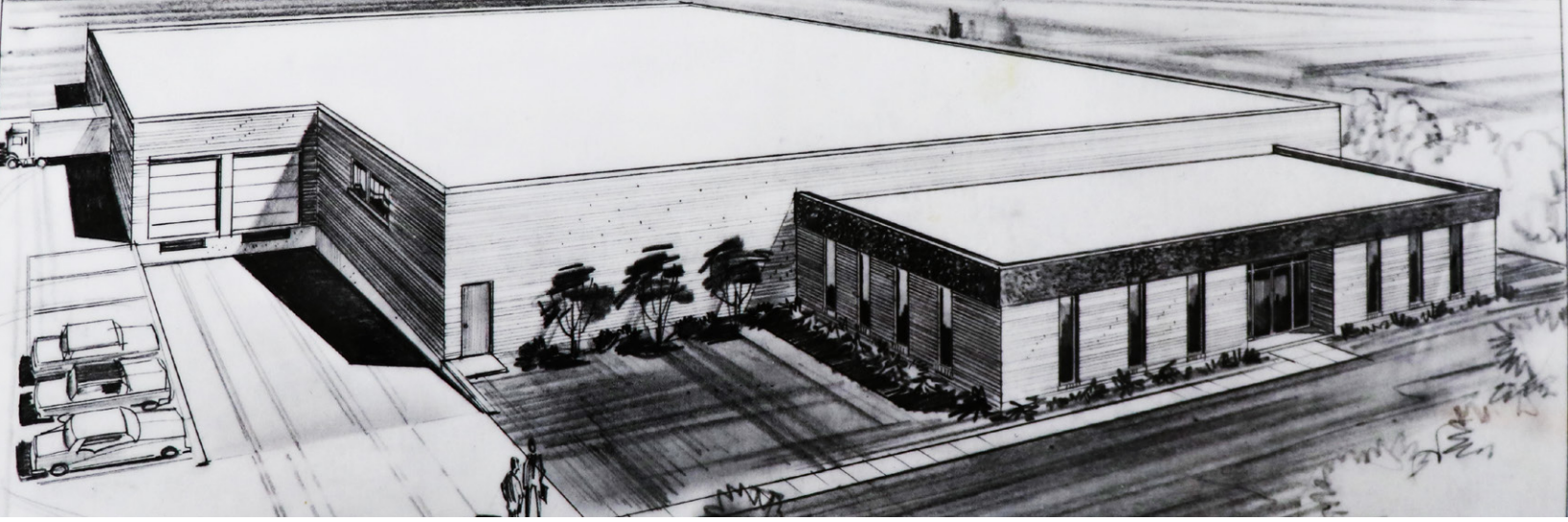




# Product Category Overview Guide

Jobsite Power, Jobsite Lighting, Portable Power & Pendant Power & Control

EXPERIENCE. INNOVATION. EXPERTISE.



# About Ericson Manufacturing

Over a century of innovation, experience and expertise has given Ericson the unique opportunity to offer the industry a comprehensive line of products, designed with exceptional worker safety in mind. Robust design and precision manufacturing set Ericson apart for quality products offering exceptionally long service life.

Ericson prides itself on building over 97% of it's products in the North America, giving our customers a reliable and secure supply line.

Our custom engineered products are designed to meet critical customer requirements for their most challenging applications and exceed their expectations, for highly engineered quality built products.

Thank you for considering Ericson Manufacturing products.



**ERICSON**<sup>®</sup>  
SAFETY IS OUR STANDARD



# How it works *together.*

For over 100 years, Ericson has designed and engineered innovative products with a keen focus on worker safety. With decades of experience developing robust products for the most demanding applications, Ericson products deliver value through their exceptionally long service life and safety. Below is an illustration of how Ericson products All Work Together to deliver safe, reliable power and lighting to critical temporary applications.

## ① Jobsite Power

### PTU

Power Transformation Units convert 480V or 600V power, to lower voltages used for portable tools and lighting.

## ② Jobsite Power

### PDU

Power Distribution Unit provide local power with overload, open neutral protection and GFCI protection for 120, 240, or 208V receptacles.

## ③ Jobsite Lighting

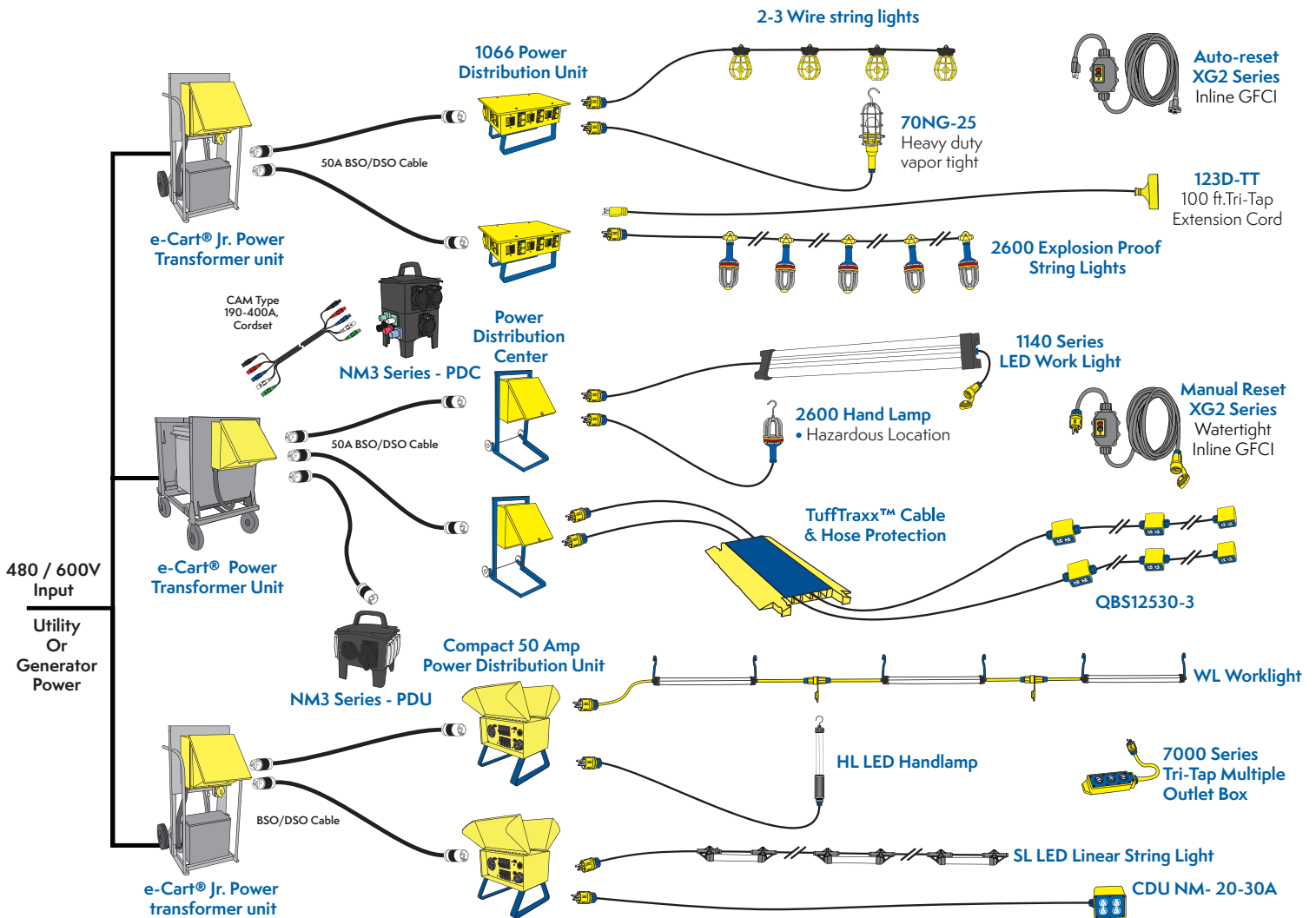
### Lighting

Ericson provides a myriad of lighting solutions, from stringlights and baylights to handlamps and hazardous area fixtures.

## ④ Portable Power

### Cordsets

Factory assembled solutions provide safe, reliable NEC, and OSHA Code Compliant GFCI & AEGCP cordsets.



\*Product not portrayed to scale



# PTU

Power Transformation Units  
15kVA - 300kVA, Single & 3-Phase, 480-600V

- cETLus listed for U.S. and Canada
- UL943-5th Edition, Self-Testing GFCI
- UL1640 - Design Assembly
- NEMA 3R, 4X and Hazardous Location
- 15-300kVA, 3-phase
- 2 & 4 wheel transformer carts
- Customizable design, color & labeling



# Metallic PDC Series

Power Distribution Center  
200-400A, Single & 3 Phase 120-600V

- cETLus listed for U.S. and Canada
- UL943-5th Edition, Self-Testing GFCI
- UL1640 - Design & Assembly
- Straight, Locking, IEC & CAM Configurations
- Stainless Steel Enclosure Option
- Custom Paint & Labeling Options Available



# NM3 Non-Metallic PDC Series

Compact Distribution Centers - Single & 3 Phase  
20-300-Amp, 125 - 250V

- UL Listed
- UL943-5th Edition, Self-Testing GFCI
- UL1640 - Design & Assembly
- Straight, Locking, IEC & CAM Configurations
- Rugged, solid rubber enclosure
- Labeling Options Available



# Steel Frame PTU & PDC

Power Transformation & Distribution Units  
15kVA - 300kVA, Single & 3-Phase, 480-600V

- cETLus listed for U.S. and Canada
- UL943-5th Edition, Self-Testing GFCI
- UL1640 - Design Assembly
- NEMA 3R, 4X and Hazardous Location
- 15-300kVA, 3-phase
- 2 & 4 wheel transformer carts
- Customizable design, color & labeling



# Enclosed Style PTU

Power Transformation Units  
15kVA - 300kVA, Single & 3-Phase, 480-600V

- cETLus listed for U.S. and Canada
- UL943-5th Edition, Self-Testing GFCI
- UL1640 - Design Assembly
- 15-300kVA, 3-phase
- 4 wheel transformer carts and skids
- Customizable design, color & labeling



# Jobsite Power



EXPERIENCE. INNOVATION. EXPERTISE.



## Jobsite Power Solutions



### 1066FS

Power Distribution Unit  
50-Amp, 125/250V



- cETLus listed for U.S. and Canada
- UL943-5th Edition, Self-Testing GFCI Receptacles
- UL1640 - Design, Assembly &
- Open Neutral Protection
- Straight, Locking, IEC & CAM Configurations
- Stainless Steel Enclosure Option
- Custom Paint & Labeling Options Available

### CDU30A & CDU50

Compact Distribution Units  
30 - 50-Amp, 125/250V

- cETLus listed for U.S. and Canada
- UL943-5th Edition, Self-Testing GFCI Receptacles
- UL1640 - Design, Assembly & Open Neutral Protection
- Patented Steel Compact Enclosure
- Straight and Locking Configurations
- Custom Paint & Labeling Options Available
- Stackable Design



### NM3 Series Nonmetallic PDU

Power Distribution Units  
50 - 100-Amp, 125/250V



- UL Listed
- UL943-5th Edition, Self-Testing GFCI Receptacles
- UL1640 - Design and Assembly
- Straight, Locking, IEC & CAM Configurations
- Indoor & Weatherproof Outdoor Designs
- Rugged, solid rubber enclosure
- Stackable Designs

### Nonmetallic CDU-NM Series

Compact Distribution Units  
20 - 30-Amp, 125/250V

- UL943-5th Edition, Self-Testing GFCI Receptacles
- Straight and Locking Configurations
- Deluxe Wire Mesh Strain Relief Cord Protection
- Indoor & Weatherproof Outdoor Designs



### Nonmetallic Power Strips

Quad Duplex & Triplex, GFCI Straight & Locking  
15-20-Amp, 125V



- UL943-5th Edition, Self-Testing GFCI Receptacles
- Meets OSHA construction site requirements
- Available with manual & automatic reset GFCI
- Assembled with premium, industrial grade cord
- Indoor & Weather Resistant Designs

# Jobsite Power



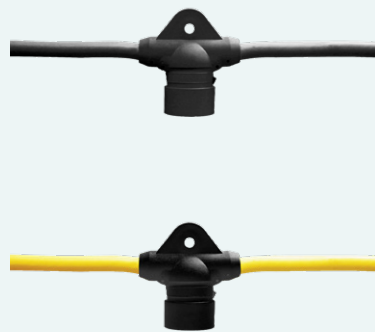
EXPERIENCE. INNOVATION. EXPERTISE.



## 142100/143100 Series

### Commercial Grade String Lights

- cULus listed
- String lights available in 50ft. and 100ft
- Designed for rapid set-up and tear down
- Supports LED lamp configurations
- Fully threaded screw shell ensures proper contact
- Assembled with molded NEMA Plug and connector
- Guards sold separately
- Product customizations are available upon request



## 123100 Series

### Commercial & Industrial Grade String Lights

- UL listed and CSA certified
- Meets OSHA construction site requirements
- Meets NEC/CEC Requirements
- Designed for rapid set-up and tear-down
- Full threaded screw-shell to ensure proper contact
- Non-conductive, snap-open lamp guard
- Built-In hanger for messenger cable and hooks
- Indoor and Outdoor Use
- Power drops available
- Multi-Circuit Capabilities

## 1006-LED Baylight 100 & 150 Watt

### Commercial Grade Bay Lighting

- cETLus listed to UL153, CSA C22.2 No. 250.4
- IP64 damp location, under roof rated
- Aluminum heat sink for heat dissipation
- Isolated constant current power supply. 6000V surge protection
- Stainless steel guard for impact protection
- 12,000 Lumens (100W), 18,000 Lumens (150W), 120 LPW
- 5000K Color temperature
- Adjustable stand, to 72", available
- 100-277V Driver



1006-ST Stand

## 1004-LED High Bay - 100 & 150 Watt

### Commercial Grade High-Bay Lighting

- cETLus listed to UL153, CSA C22.2 No. 250.4
- Product DLC listed
- 150-Watt, 100-277 VAC, 50/60 Hz
- 100-Watt is 17080 lumens, 150-Watt is 27000 lumens
- 5000K Color temperature
- Wet location rated, IP65
- Energy efficient LED technology



Jobsite Lighting

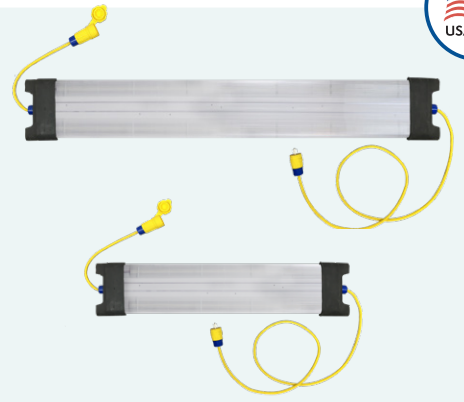




# Jobsite Lighting

## 1140/1239 LED Series Industrial Grade Linear LED- 2ft & 4ft

- cETLus listed for USA and Canada
- Lightweight, heavy duty impact resistant housing
- Fixture ends are designed for stress free cable egress
- Select units contain a emergency driver and back-up battery
- Emergency Driver is rated for 90 minutes egress
- Cool white and glare free LED for reduced eye stress
- High efficient LED driver for low power consumption
- 12-Volt Configurations available



## 1000\*, 1001 LED Series Industrial Grade, Magnetic Mount, Canopy Fixture



- \*cULus listed for U.S. and Canada
- Outdoor and wet location rated
- 12-277V Driver Range
- LED light engines provide - 3500Lu (1001), 5000Lu (1000)
- 5000K Color Temp (other CCT options available)
- Strong integral mounting magnet
- Emergency Battery Back-Up Option
- 50,000-hour lamp life expectancy
- Industrial grade NEMA 5-15 plugs standard
- Optional feed-thru with cable and connector or weather-proof receptacle and cover
- Low temperature start at -30°C
- Product customizations are available upon request

## WL LED Series Industrial Grade Linear Work Lamps

- cETLus listed
- Environmental rating: Suitable for outdoor use in wet locations
- Driver range of 100-277 volts at 50/60 Hz
- Beam angle available in 200° and 360°
- High impact, shatter-proof tube with replaceable frosted or clear tube shield
- Provided with 15A, 125V, water-tight plug & feed-thru water-tight connector



## BL500 Series Industrial Grade Magnetic Mount Canopy

- Extra Bright, 500W Tungsten Lamp
- 120V, 8800 Lumens
- Industrial grade, 15A, Water-tight Plug with 5' SOW Cord
- Designed to fit through 1.8" diameter boiler inspection opening
- Curved handle for directing light where needed
- Handle is Grounded for Safety
- Magnetic Mount for Stability
- Welded Steel Cage to Protect Lamp
- Replacement Parts Available



EXPERIENCE. INNOVATION. EXPERTISE.





## Industrial Grade Handlamps

### HL-LED Series Industrial Grade Hand Lamps



- cETLus. Approed for outdoor use/ wet locations
- High impact, shatter-proof tube with replaceable frosted or clear tube shield
- Beam angle available in 200° and 360°
- Provided with Industrial grade 15A, 125V, watertight plug
- Driver range of 100-277 volts at 50/60 Hz
- Available in 6, 11 & 22in length
- Environmental rating: Suitable for outdoor use in wet locations

### 7 & 9 - LED Series Industrial Grade Hand Lamps

- cETLus listed for U.S. and Canada
- 120 and 12-Volt options
- Use with a variety of LED, CFL or Incandescent Lamps
- Molded flexible rubber handle impervious to impact and resistant to work site chemicals
- Optional switch is available
- Accommodates cord sizes up to 14/3 SOW
- Product customizations are available upon request
- Wide selection of hand lamps and replacement parts



### 70N-LED Vapor Proof Series Industrial Grade Hand Lamps

- cETLus listed for U.S. and Canada
- Provided with High Lumen Output 16W LED Lamp
- Molded handle impervious to impact and resistant to Jobsite chemicals
- Glass globe is heat and impact resistant. Seals into handle threads
- Guard is constructed with heavy-gauge, corrosion resistant steel wire
- Quick latch wire guard for easy bulb changes
- Pre-wired model, 16/3 SOW cord and watertight molded plug



### 1917, 1918 & 1924-LED Series Industrial Grade Spot & Flood LED Handlamps

- Lightweight, Impact-Resistant Nylon Housing
- Impact-Resistant, High-Temperature Lens
- Large rubberized cushion
- Ergonomic Handle
- Outdoor/Wet Location rated
- Heavy duty SOOW cord with industrial grade watertight plug
- Designed for confined space applications
- Cool, glare free lighting available in spot and flood distributions
- Rubberized, sealed, in-line transformer, converts 120V to 12VAC



# Jobsite Lighting



EXPERIENCE. INNOVATION. EXPERTISE.





# Jobsite Lighting

## SL-LED Series LED Linear Watertight Stringlight

- cETLus pending
- NEMA 3R (IP24), 4X (IP56), 6P (IP67)
- 11 & 22" Impact resistant protective LED tube
- Available in 50 & 100' lengths
- 200 and 360-Degree beam spread
- 4000K, Color temperature, 110-277v driver
- Total lumen outputs from 4,000 – 22,900 lumens
- Custom cord, light output, labeling & CCT available



## SL HAZ - LED Series LED Linear Hazardous Location Stringlight



- Class 1, Div 2, Class 2, Div 1, NEMA 4X, 6P (IP66/67)
- US and Canadian approvals
- Protective copper free aluminum shell
- Chemical and impact resistant Borosilicate Glass Lens.
- 360-Degree, 1550 Lumen output per module
- 120-Volt driver. (A range of low & standard voltages available)
- Custom cord, light output, CCT, module spacing, and labeling available

## 2600-LED Series LED Hazardous Location Stringlight

- Class 1, Div 1, Class 1, Div 2, Class 2 Div 1, 4X, 6P (IP66/67)
- US and Canadian approval
- Protective copper free aluminum shell
- Chemical and impact resistant Borosilicate Glass Lens
- 360-Degree, 1550 Lumen LED output per module
- Custom cord, light output, CCT, module spacing, and labeling available



## 2600-LED Series Hazardous Location Handlamp



- Class 1, Div 1, Class 2, Div 1, NEMA 4X, & wet location
- US and Canadian approvals
- Chemical and impact resistant handle assemblies
- Rugged heat resistant (300F°), protective copper free cast aluminum shell with Borosilicate Glass
- 360-Degree, enclosed rated LED lamp
- Custom cord, light output, labeling and CCT available

## 1007 & 1009-LED Series LED Hazardous Location Baylight

- Class 1, Div 1 (1007) Class 1 Div 2, Class 2, Div 1 & 2, Class III, Nema 4X, IP66 (1007, 1009)
- cETLus listed for U.S. and Canada
- Copper free aluminum ambient temperature range: -40C – 60C
- T4 Temperature rating (135°C, 275°F)
- Marine and wet location rated
- 1007 available in 11,200, 14,000 & 21,000 Lumen Outputs
- 1009 available in 8,400, 11,200 & 14,000 Lumen Outputs
- Surface and pendant mount



EXPERIENCE. INNOVATION. EXPERTISE.





# PERMA-LINK®

Industrial Grade, Dust & Moisture Resistant

- UL & CSA Industrial Grade Straight & Locking Devices designed for applications where high impact, and worksite chemicals are present
- Ambient temperatures exceed other plastics, -20C – 100C
- Internal Cord Seal prevents moisture, dust and contaminants from entering the wiring chamber, causing failure
- “Floating” Cord Grip Design automatically adjusts to cord angles, preventing strain and pinching



# PERMA-GRIP™

Industrial Grade, Dust-Tight & Damp Location

- UL & CSA Industrial Grade Straight & Locking Devices
- Designed for demanding indoor applications prone to high-impact, corrosion, oils, greases and worksite solvents and chemicals
- Ambient temperatures exceed other plastics, -20C – 100C
- Cord Grip design prevents moisture, dust and contaminants from entering the wiring chamber, causing failure
- 3-Screw Design assists in quick assembly



# PERMA-TITE®

Industrial Grade, Watertight

- UL & CSA Approvals
- NEMA 4, 4X, 6, 6P and IP69K
- Patented 8 Point Tongue & Groove Sealing System
- External Husk Molded from PBT for high resistance chemicals, moisture, and petroleum absorption
- Husk Grooves for secure non-slipping gloved grip
- Color Coded Sealing Bushings are designed with various sizes to ensure secure dust and water-tight seal
- Device Blades and Contact are Plated for better contact and service life
- Removable & Replaceable self-retained cap standard for Female Connector and Optional for Plug



# PERMA-KLEEN

Industrial Grade, Antimicrobial, Watertight

- UL, CSA & NSF Approvals
- External & Husk Molded for wider temperature range, higher crush, chemical resistance
- Inhibits growth of bacteria, molds, mildews and fungi
- Patented Antimicrobial additives offers over 99.98% protection for E.coli, Salmonella Staph, MRS and Listeria
- Antimicrobial additive is effective for the life of the product
- Patented 8-Point seal offers exceptional performance for high pressure and heat washdown spray
- Device Housing Screws, Blades and Contact are Plated for better contact and service life
- Cord Grip Nut and Grommet System offer a range of cable sizes



# Pin & Sleeve

Industrial Grade, Splashproof (IP44), Watertight (IP67)

- UL and CSA Approved IEC309-2 Pin & Sleeve Devices
- Designed for Harsh Industrial, Splashproof & Water-Tight, – NEMA 4, 4X, IP44, 65, 66, 67, & 68 applications High-Impact Thermoplastic Housing with Internal Strain Relief
- Locking Ring Gasket to ensure water-tight seal
- Chamfered, Double Terminal Screws with Split Contact, Nickel plated steel springs on Connectors



Portable Power



EXPERIENCE. INNOVATION. EXPERTISE.

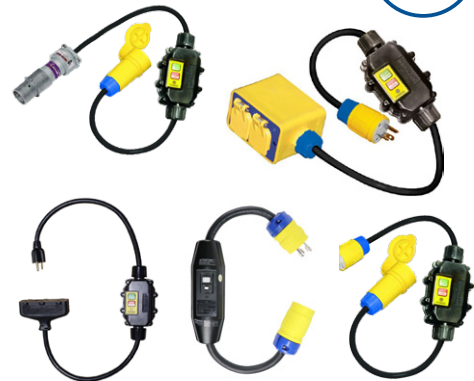


Portable Power

## XG2 - Series

### Watertight GFCI Inline Cordsets

- UL 943 5th Edition & CSA 22.2.1 self-testing GFCI
- NEMA 4X & 6P – Watertight and Temporary Submersion
- Manual and Auto-Reset Versions
- 14, 12 & 10ga. 15 & 20A 125V, 30A 250V
- Several Configurations – Tri-Tap, WP Box, Explosion Proof Plug & Connector



## 1075 - Series

### Panel Mount Solutions

- UL 943 5th Edition & CSA 22.2.1 self-testing GFCI
- Outdoor and Splash Rated - Nema 4X Button on Face
- Available in Manual and Auto Reset
- Custom OEM Wiring Options Available
- 15 & 20-Amp, 125V

## Smart Monitor Plugs & Connectors

### Indoor & Outdoor Configurations

- Meets OSHA Requirements for AEGCP
- 7 Electrical & Continuity Tests Automatically
- Green and Red Pilot Lights Signal Receptacle and Cord Status
- Available in Indoor and Watertight Configurations
- 15 & 20-Amp, 125V



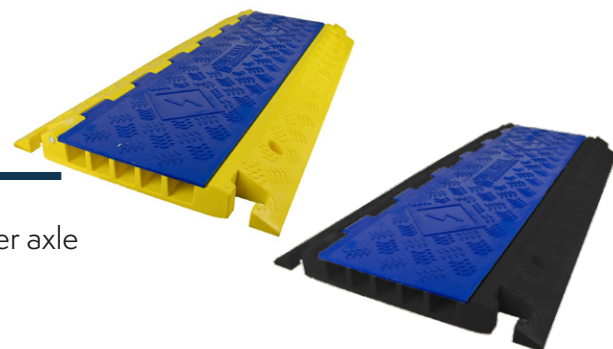
## Factory Assembled Cordsets

- UL and CSA Approved
- 125-600-Volt, 15-100-Amp Configurations
- Perma-Link, Grip, Tite, Kleen & Smart Monitor versions
- Standard in IEC and Cam-Lock Styles
- Custom Cord, Color, Length, NEMA, IEC, CAM, Hazardous Location Plug & Connector Configurations



### Cable & Hose Protection

- NEC / OSHA compliance
- Industry leading load ratings up to 50,000 lbs. per axle
- Industrial and Extreme duty options
- Constructed from lightweight polyurethane
- Custom base and cover colors available



EXPERIENCE. INNOVATION. EXPERTISE.

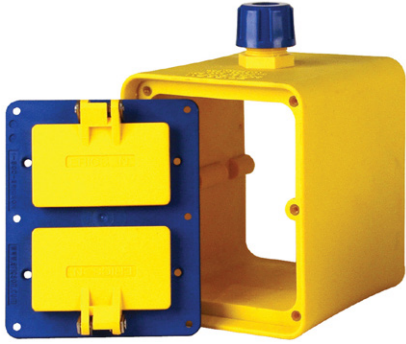




## 6000 Series & Covers

Portable, Indoor & Outdoor Nonmetallic Boxes & Covers

- Rugged TPE Exterior offering Crush and Chemical Resistance
- Single Gang, Double Sided, Standard and Deep Depths
- Indoor and Outdoor Cord Clamps with Feed-Thru
- Available with and without popular cover plates
- Available in Standard & Custom Colors & Assemblies



## 8000 Series & Covers

Portable, Indoor & Outdoor Nonmetallic Boxes & Covers

- Rugged TPE Exterior offering Crush and Chemical Resistance
- Double Gang, Double Sided in Deep Depth Standard
- Indoor and Outdoor Cord Clamps with Feed-Thru
- Available with and without popular cover plates
- Available in Standard & Custom Colors & Assemblies

## PWDX-Series

Portable, Watertight, Nonmetallic Boxes & Receptacles

- cULus approved for USA & Canada
- Watertight, Impact, Chemical and Corrosion Resistant with Feed-Thru
- Watertight Duplex Straight & Locking Receptacle Configurations
- Pre-wired for quick installation
- FS Box Dimensions with Standard & Deep Options



## FS-Series

Portable, Watertight, Nonmetallic Boxes & Receptacles

- UL Listed & CSA Certified
- Wet Location Approved, Space Saving Surface Mounting
- 15-20-Amp Straight Blade and 15-30-Amp Locking Male Inlet & Receptacle support Ericson Watertight Plugs
- Rugged Chemical and Corrosion Resistant Rubber
- FS, FD & Open style box options for feed-in and feed-through
- Non-Metallic Cord Grip & Deluxe Wire Mesh Available
- Factory assembled cord drops are available

## Factory Assembled Cordsets & Outlet Boxes

- Wide range of NEMA, IEC, CAM Type Cordsets
- 6000, 6100, 6200 & 8000 Series. PWDX & FS Series
- Customized with Cable Type, Length Wire Mesh Support and Receptacle Options



Portable Power



EXPERIENCE. INNOVATION. EXPERTISE.



### 3100-Series

#### Commercial Grade Reels

- cULus Listed for indoor use
- Reinforced Steel & Plastic Construction
- Separate mounting base for easy installation (Flex Rig)
- 4-Roller Guide for positional pull, with adjustable ball-stop (Flex Rig)



### 4000-7000 - Series

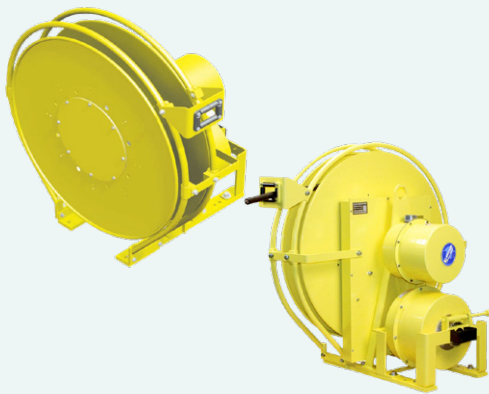
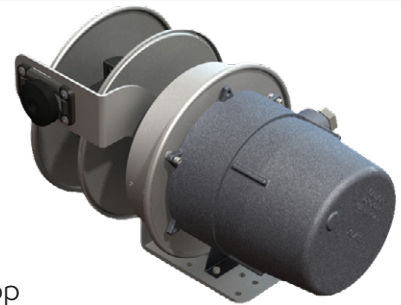
#### Industrial Cable Reels

- UL/CSA
- Weatherproof NEMA 4 Slipping rating
- Heavy Duty, All steel Construction
- Lift and Drag Application Approved
- Cord range – 16/3-12 conductor to 10/3-10/6
- 8-30A – 600V rated
- Power and Control Application Approved
- 4-Roller Guide for positional pull, with adjustable ball-stop

### 8000-Series

#### Hazardous Location Cable Reels

- UL Approved Hazardous Location Reel
- Lift and Drag Application Approved
- Cord range – 16/3-14/4 – 35A - 600V
- Power and Control Application Approved
- 4-Roller Guide for positional pull, with adjustable ball-stop



### 9000-10000 - Series

#### Industrial Grade, Motorized Cable Reels

- All-steel modular construction with yellow powder coated finish
- NEMA 4 sealed slip ring enclosure
- 345° adjustable, 4-roller guides for direct or lateral pull-out and return to minimize cable stress
- Lifetime lubricated spring motor canister with an exclusive quick change spring feature
- External spring torque adjustment

### SDR-Series

#### Industrial Grade Static Discharge Reels

- 50–100' Cable (1/8" and 3/32" coated cable) Length with 100A Grounding Clamp
- .3–2.0 Ohm resistance
- Rugged All-Steel Construction with Epoxy Coated Enclosures
- Auto locking, for constant tension
- 4-Roller Guide with adjustable ball-stop (SDR-100)



Pendant Power & Control



EXPERIENCE. INNOVATION. EXPERTISE.



## Pulling Series

### Wire Mesh

- Designed for a variety of cable & bundle diameters to 4"
- Complete Line of Junior, Short and Standard Lengths
- Cable/Bundle Range from .25" - 3.99"
- High Strength Single and Double Weave Galvanized Steel Strand



## Supporting Series

### Wire Mesh

- Available in Universal Bale, Double Eye, Offset and Single Eye Styles
- Closed, Rod and Split Lace Versions to 3.99"
- Conduit Riser, Single Weave Closed and Split Mesh and Rod Closing to 6" Conduit
- Bus Drop Safety Springs Available

## Indoor & Deluxe Outdoor Series

### Wire Mesh

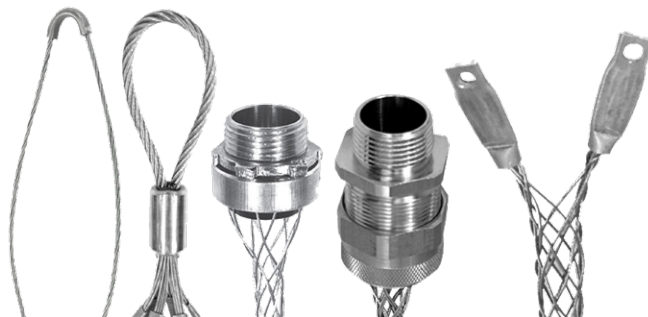
- UL and cUL listed
- Stainless Steel Mesh (water-tight)
- Used with switch boxes, power drops, machines & tools
- Insulated and non-insulated versions - 3/8" through 3.25"
- Endless weave provides consistent cable tension
- Various Deluxe Mesh styles in straight & 90-degree
- Available in female thread



## I-Grip Indoor Series

### Wire Mesh

- I-Grips versions available in high strength Galvanized steel strand
- Attaches to external wiring device cord clamp screws
- Available in 3/8" through 1.25"



Pendant Power & Control





# Pendant Power & Control

## 5500-Series

### Crane Push Button Station

- Indoor Use Only, Type 4X high impact case
- 2-12 Button Configurations
- Factory assembled custom units available
- Replacable Case, Contacts, Legends, & Button Covers
- Operature Range 5° F to 160° F (-15° C to 70°C)
- Custom configurations and pre-wiring available



## 5502-PG Pistol Grip Series

### PG Compact Pistol Grip Styles

- Popular compact, 2-button single speed design
- Ergonomic pistol grip handle
- Indoor Use Only

## 5503-PG Pistol Grip Series

### PG Style with E-Stop

- Available with 1, 2, 3 speed with momentary and maintained E-Stop contacts
- Factory assembled units available
- Replacement Switches, Legends, and Button Covers
- Indoor use only



## Flexible MINI-SYNC™ & MICRO-SYNC™

### Series Connectors, Cable Assemblies and Receptacles

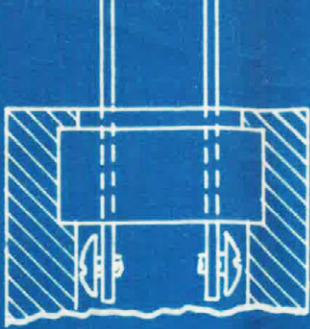


- AC & DC Configurations Available
- NEMA 6P and IP68
- Compatible with US and European Sensors
- Corrosion Resistant Gold-Plated Contacts
- Custom Configurations Available

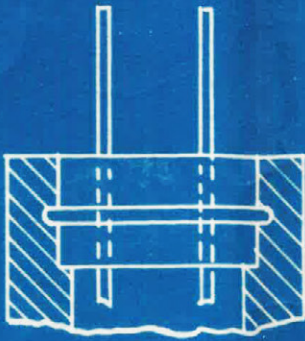


EXPERIENCE. INNOVATION. EXPERTISE.

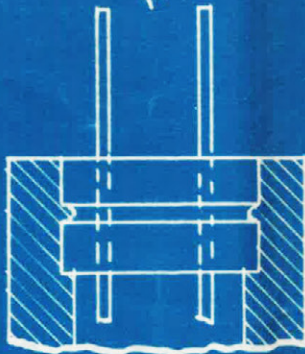




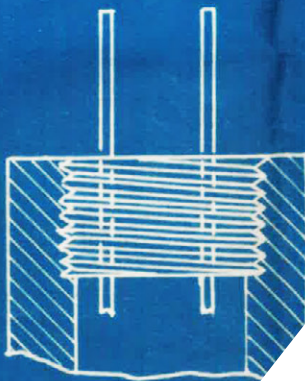
ε



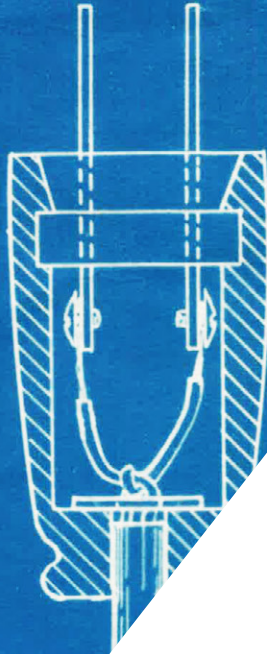
4



2



ε



Manufacturing Electrical Safety  
Products for over 100 years.

4323 Hamann Parkway  
Willoughby, OH 44094  
info@ericson.com  
ericson.com  
1.800.ERICSON  
L1000894E